

State of Wyoming Corner Record

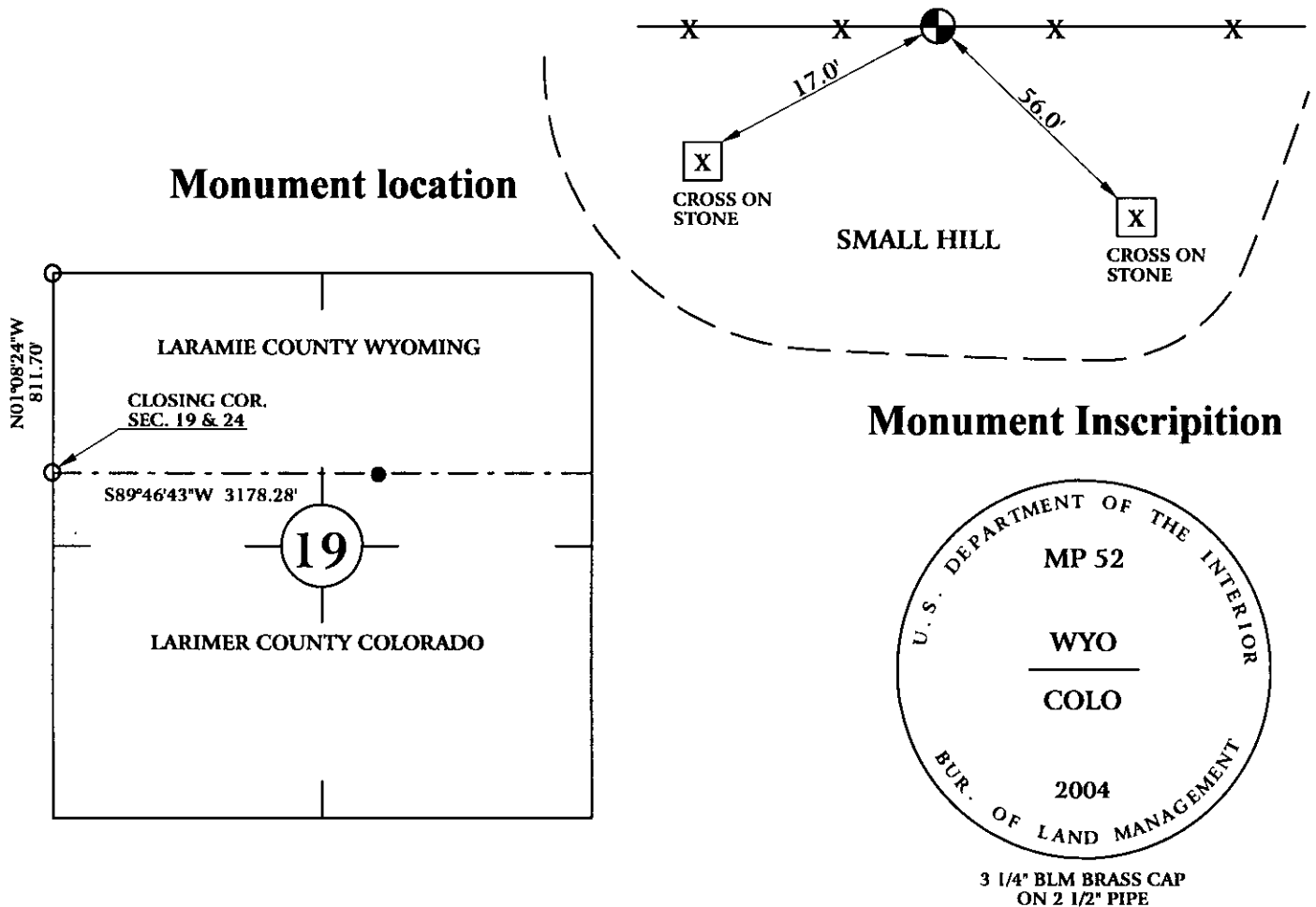
(In compliance with the CORNER PERPETUATION AND FILING ACT, Wyoming Statutes, 1997 Section 33-29-140 et. seq., and the Rules and Regulations of the Board of Professional Engineers and Professional Land Surveyors)

Reverse side of this form may be used if more space is needed.

Record of original survey and citation of source of historical information (if corner is lost or obliterated). Description of corner monumentation evidence found and/or monument and accessories established to perpetuate the location of this corner. Sketch of relative location of monument, accessories, and reference points with course and distance to adjacent corner(s) (if determined in this survey). Method and rationale for reestablishment of lost or obliterated corner.

ORIGINAL CALL FOR 7' X 6" POST IN 6' X 4' MOUND OF STONES.

FOUND 3 1/4" BLM BRASS CAP ON 2 1/2" PIPE IN LARGE MOUND OF STONES, NEXT TO REMAINS OF 6' X 6" WOOD POST WITH FAINT WY--- SCRIBED ON FACE. SET TIES AS SHOWN BELOW.



Date of Field Work: May 3, 2005

Office Reference: GALLEGOS05.pro

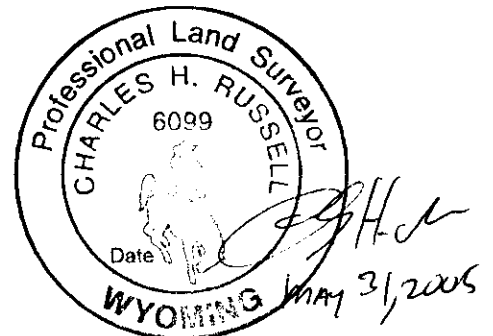
Cross Index Plat

1	2	3	4	5	6	7	8	9	10	11	12	13	14	15	16	17	18	19	20	21	22	23	24	25		
A																									A	
B																									B	
C	6	5	4	3	2	1																			C	
D																										D
E																										E
F																										F
G	7	8	9	10	11	12																				G
H																										H
I																										I
J																										J
K																										K
L	18	17	16	15	14	13																				L
M																										M
N																										N
O																										O
P	19	20	21	22	23	24																				P
Q																										Q
R																										R
S																										S
T	30	29	28	27	26	25																				T
U																										U
V																										V
W																										W
X	31	32	33	34	35	36																				X
Y																										Y
Z																										Z

Firm/Agency, Address
 CHARLES H. RUSSELL P.L.S. 6099
 AMERICAN WEST LAND SURVEYING CO.
 29 SOUTH 4TH AVENUE
 BRIGHTON, CO 80601

This corner record was prepared
 by me or under my direction
 and supervision.
 SEAL & SIGNATURE

Telephone Number:
 303-659-1532



RECORDED 6/22/2005 AT 12:32 PM REC# 420187 BK# 1888 PG# 1057
 DEBRA K. LATHROP, CLERK OF LARAMIE COUNTY, WY PAGE 1 OF 1

Corner Name Colorado / Wyoming Mile Post 52, T 12 N, R 68 W of the 6th P.M.

Cross-Index No.: N.9-3.4

County: Laramie Wyoming